

MAGICFX® SMOKEJET

USER MANUAL



© 2016 MAGIC FX B.V.

MAGICFX® SMOKEJET

User Manual

SAFETY INFORMATION



Please read the following safety information carefully before operating the machine. Information includes important safety information about installation, usage, and maintenance. Pay attention to all warning labels and instructions in this manual and printed on the machine.

If you have questions about how to operate the machine safely, please contact your local MAGIC FX dealer for help.

- Keep this device dry.
- Always connect to a grounded circuit to avoid risk of electrocution.
- Before connecting machine to power, always check voltage indicate on machine match to your local AC voltage. Do not use the machine if AC power voltage does not match.
- Disconnect the machine from AC power before servicing and when not in use.
- This product is for indoor use only! Do not expose to rain or moisture. If fluid is spilled, disconnect AC power and clean with a damp cloth. If fluid is spilled onto electronic parts, immediately unplug the machine and contact your local MAGIC FX dealer for advice.
- No user serviceable and modifiable parts inside. Never try to repair this product, unauthorized technician may lead machine to damage or malfunction.
- For adult use only. Never leave the machine running unattended.
- Installed in well ventilated area. Provide at least 50 cm space around the machine.
- Never add flammable liquid of any kind to the machine.
- Make sure there are no flammable materials close to the machine while operating.
- Only use MAGIC FX fluid. Other fluid may lead to heater clog and malfunction.
- If the machine fails to work, unplug the machine and stop operation immediately. Contact your local MAGIC FX dealer for advise.
- Before transporting the machine, make sure the fluid tank is completely drained.
- Smoke fluid may present health risks if swallowed. Do not drink smoke fluid. Store it securely. In case of eye contact or if fluid is swallowed immediately look for medical advice.

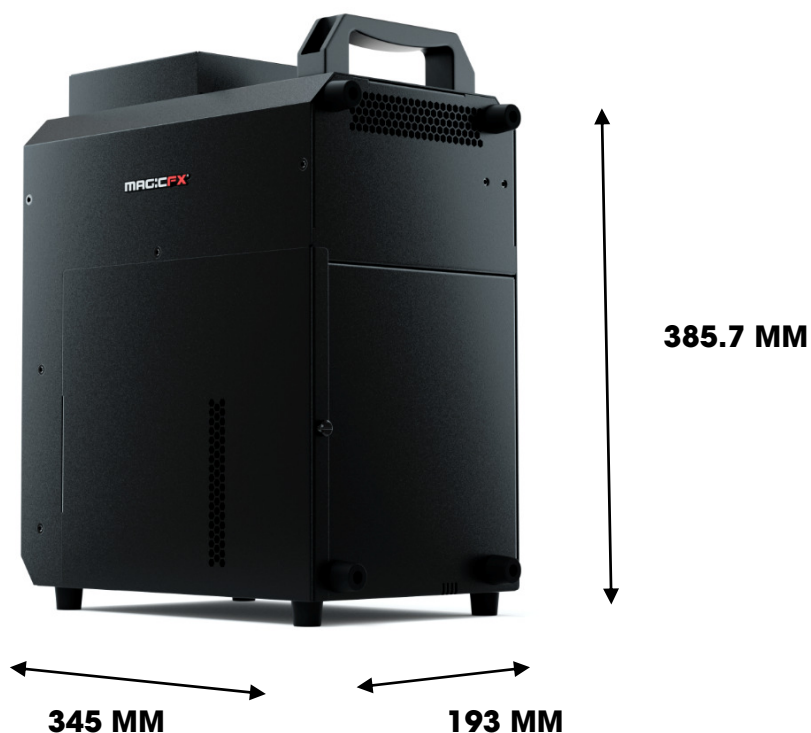
UNPACKING AND INSPECTION

Immediately upon receiving the machine, carefully unpack the carton, check all content to ensure that all parts are present and have been received in good condition. If any parts appear damaged or mishandled from shipping, notify the shipper immediately and retrain the packing material for inspection.

What is included:

- 1 x SMOKEJET
- 1 x Remote
- 1 x PowerCON True1 to Shuko (1,5 m)
- 1 x User Manual

PRODUCT DIMENSION



PRODUCT OVERVIEW



22 x 3W LED
(5R, 6G, 6B, 5A)

LCD Control Panel

Wireless Receiver

PowerCon

XLR 5-Pin DMX Connector

SETTING UP

Step 1: Place the machine on a flat surface and in a suitable large area with at least 50 cm open space around the machine.

Step 2: Fill the fluid tank with MAGIC FX approved fluid.

Step 3: Connect the machine to suitable rated power supply. To determine the power requirement for the machine refer to the label on the back of the machine.



Always connect the machine to a protected circuit and ensure it is properly grounded to avoid risk of electrocution.

Step 4: Turn on the machine and allow it to heat up. Heat up takes approximately 5 minutes. Once the machine has reached operating temperature, the LCD display will show "Ready To Fog". Now the machine is ready for operation.

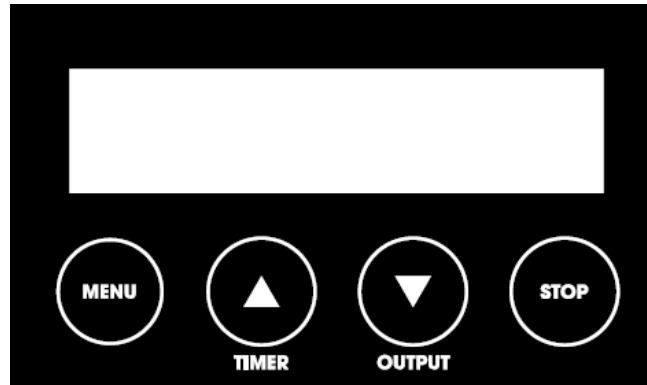
Step 5: To start making fog, locate the **OUTPUT** button on the control panel, and press the button to start making fog.

Step 6: To turn off the machine, press **STOP** button and turn Powercon to the **OFF** position.

OPERATION

Control Panel Operation

The machine can be operated with onboard digital control interface



Button	Function
(MENU)	Scroll through setting menu
▲ (UP)/(TIMER)	Up/Activate Timer function
▼ (DOWN)/(OUTPUT)	Down/Activate Output function
(STOP)	Deactivate Timer/Volume function

CONTROL MENU

DMX512 Address: 1	Set DMX address from 1 to 504
Stand Alone Set Master	Set machine as Master of Slave unit
Color Mode On	Turn LED On or Off
Color Mode Marco:01	Set LED output color from macro 1 to 10

<div>Color Mode</div> <div>Chase:01</div>	Set LED chase from 1 to 15
<div>Timer</div> <div>Interval 15 Sec</div>	Set interval from 15 to 360 seconds
<div>Timer</div> <div>Duration 5 Sec</div>	Set duration from 1 to 5 seconds
<div>Wireless Setting</div> <div>On</div>	Turn On or Off wireless control
<div>Wireless Setting</div> <div>Button A:M01</div>	Set wireless remote button function macro color 1 to 10 or chase 1 to 15 and off.
<div>Wireless Setting</div> <div>Button B:M01</div>	Set wireless remote button function macro color 1 to 10 or chase 1 to 15 and off.
<div>Wireless Setting</div> <div>Button C:M01</div>	Set wireless remote button function macro color 1 to 10 or chase 1 to 15 and off.
<div>Wireless Setting</div> <div>Button D:M01</div>	Set wireless remote button function macro color 1 to 10 or chase 1 to 15 and off.
<div>LED Setting</div> <div>Fog Only</div>	Setting for LED to turn on with fog only or always on.
<div>LED Fade Out</div> <div>Delay: 0 Sec</div>	Set LED delay time from 0 to 5 seconds.
<div>Run Last Setting</div> <div>On</div>	Turn On/Off run last setting function

2 Second Jet Mode

Off

Turn On/Off 2 Second Jet Mode

W-DMX Power

Off

Turn On/Off W-DMX

W-DMX Reset

Off

Rest W-DMX connection

WIRELESS OPERATION

Wireless remote control system consists of a transmitter equipped with four buttons to activate four user configurable LED setting and fog; with an onboard receiver attach to the rear panel of SmokeJet.

*Remote**Wireless Receiver*

Wireless settings are configurable through onboard control panel, refer to control menu section to setup each buttons.

In a free open space the effective distance is 50 meters, actual usage depending on obstacle level the effective distance is 10-25 meters.

REGISTERING TRANSMITTER

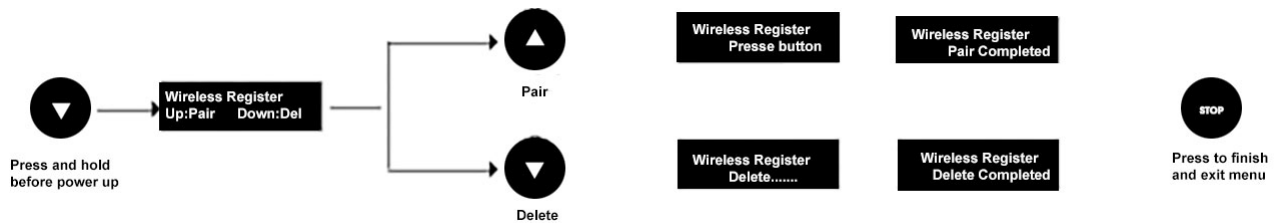
Transmitter can be pair or deleted from the receiver. Each receiver can pair up to 10 transmitters. Follow below steps to pair or delete transmitter from receiver.

Step 1: Power off SMOKEJET

Step 2: Press and hold (DOWN) button

Step 3: Turn power on and release (DOWN) button when LCD display blinks

Step 4: Follow the menu instruction to pair or delete transmitter

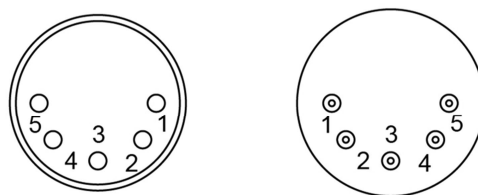


TRANSMITTER BATTERY REPLACEMENT

If effective distance seems to be decreased, it is possible the battery level are low and require replacement. In order to replace the battery, undo the three screws on the back of transmitter to release the cover. Replace with same type and specification of battery which is 27A 12V

DMX CONNECTOR PIN ASSIGNMENT

The machine provides 5 pin XLR connector for DMX connection. Diagram below indicate pin assignment information



5 Pin XLR

Pin	Function
1	Ground
2	Data-
3	Data+

DMX CHANNEL FUNCTION

Channel 1	DMX Value Range	Function
Fog	0 - 4 5 - 255	Fog Off Fog On
Channel 2	DMX Value Range	Function
Red LED	0-255	0-100%
Channel 3	DMX Value Range	Function
Green LED	0-255	0-100%
Channel 4	DMX Value Range	Function
Blue LED	0-255	0-100%
Channel 5	DMX Value Range	Function
Amber LED	0-255	0-100%
Channel 6	DMX Value Range	Function
Chase	1-15	Chase 1
	16-31	Chase 2
	32-47	Chase 3
	48-63	Chase 4
	64-79	Chase 5
	80-95	Chase 6
	96-111	Chase 7
	112-127	Chase 8
	128-143	Chase 9
	144-159	Chase 10
	160-175	Chase 11
	176-191	Chase 12
	192-207	Chase 13
	208-223	Chase 14
	224-255	Chase 15
Channel 7	DMX Value Range	Function
Chase Speed	0-255	0-255 step per min
Channel 8	DMX Value Range	Function
Master Dimmer	0-255	0-100%
Channel 9	DMX Value Range	Function
Strobe	0-255	1-20 Hz

FLUID

Use MAGIC FX Smoke Fluid for the best effect for the SMOKEJET. The machine is tested and calibrated with this liquid to get the best output performance. Warranty will be void if any other type of liquid is used, improper use of liquid may lead to machine failure and malfunction.

SERVICE AND MAINTENANCE

- Do not allow the machine to become contaminated.
- Remove dust from air vents with air compressor, vacuum or a soft brush.
- Only use a damp cloth to clean the casing.
- Before storing run distilled water through the system to help avoid condensing the pump or heater.
- It is recommended to run the machine on a monthly basis in order to achieve best performance and output condition.
- Excessive dust, liquid and dirt built up will degrade performance and cause overheating.

BREAKER RESET

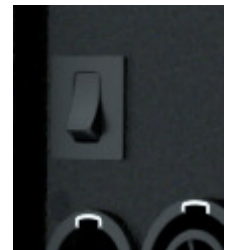


Disconnect AC power before reset breaker. Only replace fuse with same type and rating.

Step 1: Disconnect AC power

Step 2: Flip breaker to ON position

Step 3: Turn on machine to test



BREAKER

230V = 9A 250V

TECHNICAL SPECIFICATIONS

Input voltage	230Vac 50/60Hz
Breaker	230Vac = 9A 250Vac
Heater	1420W
Warm-up time	5 min. (approx.)
Coverage volume	Height 5 Meter, Width 1 Meter
Max. operating time	8 seconds burst
Fluid tank capacity	2.4 L
Fluid consumption	2,5 ml/s.
Recommended Fluid	MAGIC FX Fog Fluid for the best effect
Control option	DMX 512, Manual, Timer, Wireless remote
DMX addresses	9 addresses
Power connection	Neutrik® powerCON TRUE1
DMX data connection	5-pin XLR
Dimension	L345 x W193 x H380 mm
Dry weight	11.1 kg

MAGIC FX B.V.

Schouwrooij 27

NL-5281 RE BOXTEL

The Netherlands

T. +31(0)411 63 50 13

F. +31(0)411 63 50 12

E. info@magicfx.eu

Chambre of commerce : 17178664

V.A.T. : NL814544228B01

Rev 0.1 – Nov 2016